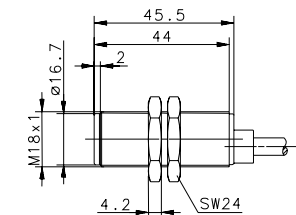
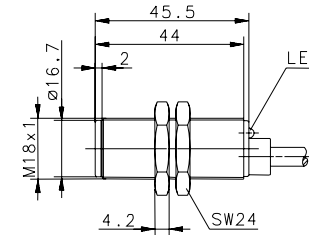
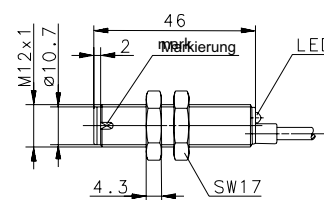
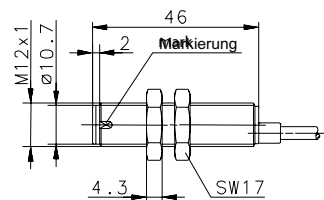


ELECTRONIC MAGNETIC SENSORS Type M12, M18



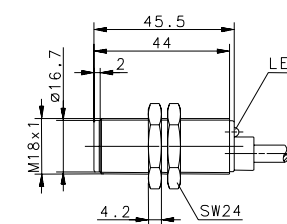
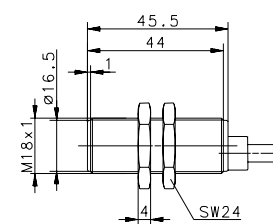
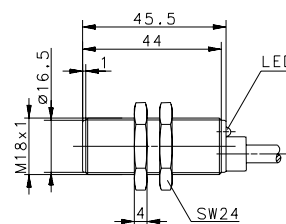
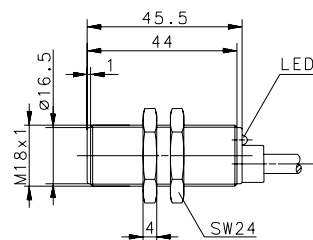
Type	M12	M12	M18	M18
Enclosure material	PA, red	PA, red	PBT, black	PBT, black
Operating mode	Hall	Hall	Hall	Hall
Magnetic sensitivity (mT)	–	–	10 mT	10 mT
Sensing distance (Sn)	0-2 mm	0-2 mm	17 mm	17 mm
Reference magnet (Side)	–	–	T-62 N/S	T-62 N/S
Type of connection	Cable 2 m	Cable 2 m	Cable 2 m	Cable 2 m
Special feature	Speed sensor	Speed sensor		
PNP	NO contact		6372263097 MEK-M18PS/H10-KL2	
PNP	NC contact	6379262119 MEK-M12PD/H-KL2	6372163099 MEK-M18PÖ/H10-KL2	
PNP	bistable		6373463127 MEK-M18PB/H11-KL2	
NPN	NO contact			6362663007 MEK-M18NS/H10-K2
NPN	NC contact	6369662027 MEK-M12ND/H-K2		
Technical data				
Rated operating voltage range	U_b	10–36 VDC	10–39 VDC	10–39 V
Rated operating current	I_e	20 mA	400 mA	400 mA
Max. switching voltage	F	20 kHz	10 kHz	10 kHz
Function/operating voltage indicator		–	LED/–	–
Sensitivity adjustable				
Short circuit-protection		cyclic	cyclic	cyclic
				Current limiter
Mechanical data				
Ambient temperature (min/max)		–25°C/+70°C	–25°C/+70°C	–25°C/+70°C
Protection class in accordance with IEC 529, EN 60529		IP67	IP67	IP67
Connection		3 x 0.14 mm ²	3 x 0.14 mm ²	3 x 0.14 mm ²



ELECTRONIC MAGNETIC SENSORS Type M18



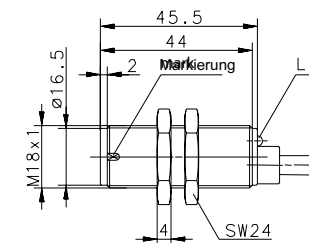
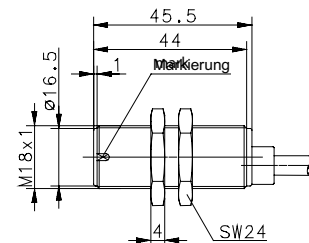
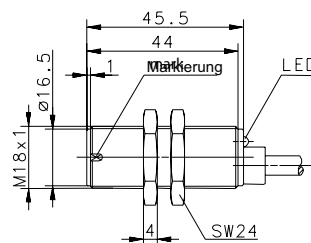
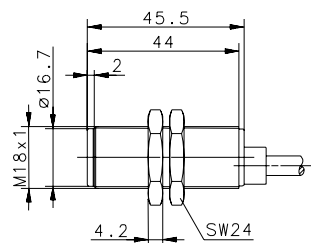
Type	M18	M18	M18	M18
Enclosure material	CuZn39Pb3	CuZn39Pb3	CuZn39Pb3	PBT, black
Operating mode	Hall	MR	Hall	MR
Magnetic sensitivity (mT)	11 mT	1 mT	11 mT	1 mT
Sensing distance (Sn)	17 mm	45 mm	17 mm	45 mm
Reference magnet (Side)	T-62 N/S	T-62 N/S	T-62 N/S	T-62 N/S
Type of connection	Cable 2 m	Cable 2 m	Cable 2 m	Cable 2 m
Special feature				
PNP	NO contact	6373263102 MEM-M18PS/M01-KL2	6363863037 MEM-M18NB/H11-K2	6373263101 MEK-M18PS/M01-KL2
PNP	NC contact	6373163104 MEM-M18PÖ/M01-KL2	6362663006 MEM-M18NS/H10-K2	6373163103 MEK-M18PÖ/M01-KL2
NPN	NO contact	6373463128 MEM-M18PB/H11-KL2		
NPN	NC contact			
NPN	bistable			
Technical data				
Rated operating voltage range	U_b	10–39 V	10–39 VDC	4.5–24 VDC
Rated operating current	I_e	400 mA	400 mA	25 mA
Max. switching voltage	F	10 kHz	10 kHz	20 kHz
Function/operating voltage indicator		LED/-	LED/-	-
Sensitivity adjustable				
Short circuit-protection		cyclic	cyclic	Current limiter
Mechanical data				
Ambient temperature (min/max)		-25°C/+70°C	-25°C/+70°C	-25°C/+70°C
Protection class in accordance with IEC 529, EN 60529		IP67	IP67	IP67
Connection		3 x 0.14 mm ²	3 x 0.14 mm ²	3 x 0.14 mm ²



ELECTRONIC MAGNETIC SENSORS Type M18



Type	M18	M18	M18	M18
Enclosure material	PBT, black	CuZn39Pb3	CuZn39Pb3	PBT, black
Operating mode	Hall	Hall	Hall	Hall
Magnetic sensitivity (mT)	11 mT	-	-	-
Sensing distance (Sn)	17 mm	0 – 2 mm	0 – 2 mm	0 – 2 mm
Reference magnet (Side)	T-62 N/S	-	-	-
Type of connection	Cable 2 m	Cable 2 m	Cable 2 m	Cable 2 m
Special feature		Speed sensor	Speed sensor	Speed sensor
PNP	NO contact	6379263122 MEM-M18PD/H-KL2	6369663030 MEM-M18ND/H-K2	6379263121 MEK-M18PD/H-KL2
PNP	NC contact			
NPN	NO contact			
NPN	NC contact			
NPN	bistable	6363863038 MEK-M18NB/H11-K2		
Technical data				
Rated operating voltage range	U_b	4.5–24 VDC	10–39 VDC	10–36 VDC
Rated operating current	I_e	25 mA	400 mA	20 mA
Max. switching voltage	F	20 kHz	10 kHz	20 kHz
Function/operating voltage indicator		-	LED/-	LED/-
Sensitivity adjustable				
Short circuit-protection		Current limiter	cyclic	cyclic
Mechanical data				
Ambient temperature (min/max)		-25°C/+70°C	-25°C/+70°C	-25°C/+70°C
Protection class in accordance with IEC 529, EN 60529		IP67	IP67	IP67
Connection		3 x 0.14 mm ²	3 x 0.14 mm ²	3 x 0.14 mm ²



ELECTRONIC MAGNETIC SENSORS Type M18, 5x5x25 mm, 8x8x40 mm



Type	M18	5 x 5 x 25 mm	8 x 8 x 40 mm	8 x 8 x 40 mm
Enclosure material	PBT, black	CuZn39Pb3	CuZn39Pb3	CuZn39Pb3
Operating mode	Hall	MR	Hall	MR
Magnetic sensitivity (mT)	-	3 mT	10 mT	2 mT
Sensing distance (Sn)	0 – 2 mm	10 mm	17 mm	45 mm
Reference magnet (Side)	-	T-62 N/S	T-62 N/S	T-62 N/S
Type of connection	Cable 2 m	Cable 2 m	Cable 2 m	Cable 2 m
Special feature	Speed sensor			
PNP	NO contact	6373299134 MEM-Q05PS/M03-K2		6373280106 MEM-Q08PS/M02-K2
PNP	NC contact			
PNP	bistable	6369663029 MEK-M18ND/H-K2		
NPN	NO contact		6362680012 MEM-Q08NS/H10-K2	
NPN	bistable		6363880043 MEM-Q08NB/H11-K2	
Technical data				
Rated operating voltage range	U_b	10–36 VDC	4.5–30 VDC	4.5–24 VDC
Rated operating current	I_e	20 mA	200 mA	25 mA
Max. switching voltage	F	20 kHz	10 kHz	20 kHz
Function/operating voltage indicator	-	-	-	-
Sensitivity adjustable				
Short circuit-protection	cyclic	Current limiter	Current limiter	cyclic
Mechanical data				
Ambient temperature (min/max)		-25°C/+70°C	-20°C/+70°C	-25°C/+70°C
Protection class in accordance with IEC 529, EN 60529		IP67	IP67	IP67
Connection		3 x 0.14 mm ²	3 x 0.05 mm ²	3 x 0.14 mm ²

